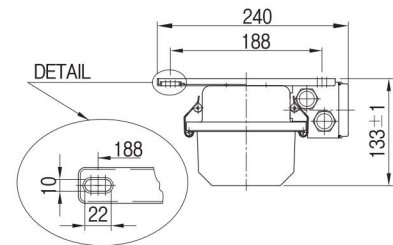
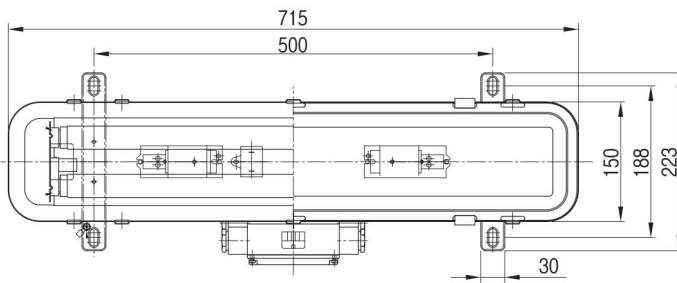
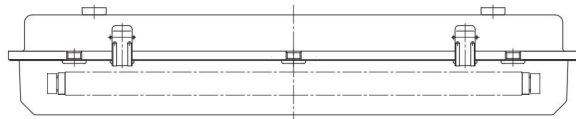
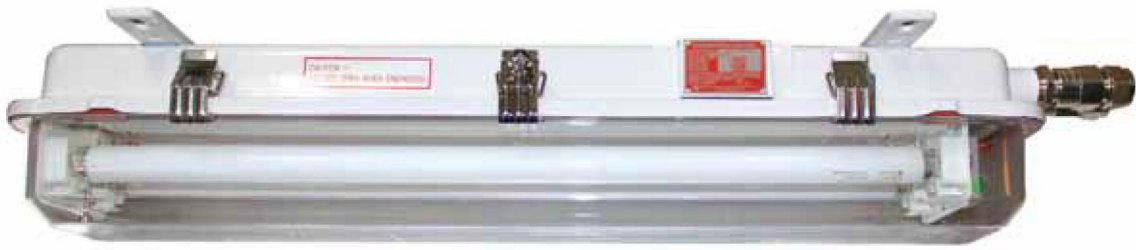


## Fluorescent Lighting Fixtures

# EFXS SERIES

Type of Explosion-proof : **Increased Safety (Ex ed IIC T5 IP66)**



## Application

**EFXS Series Fluorescent Lighting fixtures are used**

- In heavy process industries having environments where flammable or explosive vapors or gases are present.
- In hazardous areas, both indoors and outdoors where long life and low maintenance costs are desired.
- In petroleum refineries, chemical, petrochemical and other heavy process industry facilities.
- Where ignitable concentrations of flammable gases, vapors or liquids can exist all of the time or some of the time under normal operation conditions.

## Features

- Safety interlock between enclosure and diffuser switches off on opening
- Two pin lamp luminaires

## Standard Materials

- Enclosure : Sheet steel
- Inner Reflector : High purity aluminium
- Cover : Polycarbonate

## Standard Finish

- MUNSSELL No. White N-9.3
- If you want another color, contact us please.

## Compliance & Certification

- IEC 60079-0,1,7
- Notification of Ministry of Labor No. 2010-36
- Certified by KGS (Korea Gas Safety Corporation)

### Technical Data

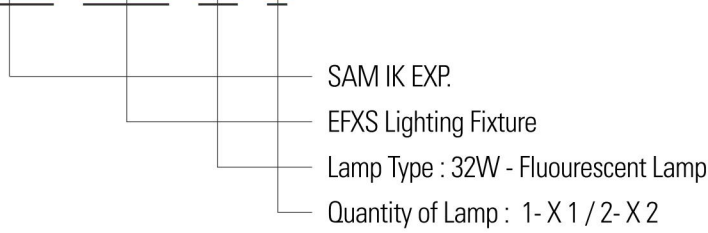
Electrical Ratings	
Rated Voltage	AC110V/220V/240V (*See Below)
Rated Wattage	18W*1 / 18*2 / 20W*1 / 20W*2
Rated Frequency	50Hz/60Hz
Entry Size	1/2", 3/4"

### Ordering Number

LAMP	Watt	Catalog No.	Weigh
Fluourescent Lamp	18W X 1	SEBP-FLRS181	4.1kg
	18W X 2	SEBP-FLRS182	
	20W X 1	SEBP-FLRS201	4.2kg
	20W X 2	SEBP-FLRS202	

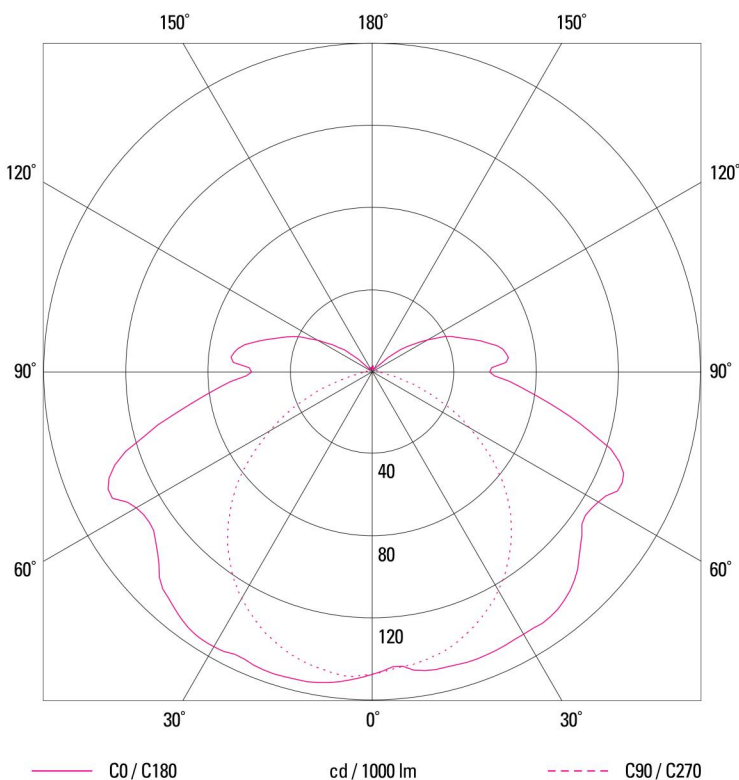
### Ordering Information

**SEBP - EFXS - 18 - 1**



**\* Entry Size : 1/2" / 3/4"**

### Photometric Data



	C0	C90	C180
0°	147	147	147
10°	148	143	154
20°	149	136	155
30°	148	123	155
40°	145	106	150
50°	132	83	137
60°	127	55	133
70°	128	27	134
80°	87	8	90
90°	57	2	59
100°	64	3	66
110°	48	2	49
120°	31	2	31
130°	14	2	14
140°	2	2	2
150°	2	2	2
160°	2	2	2
170°	2	3	2
180°	3	3	3
	cd / 1000 lm		